

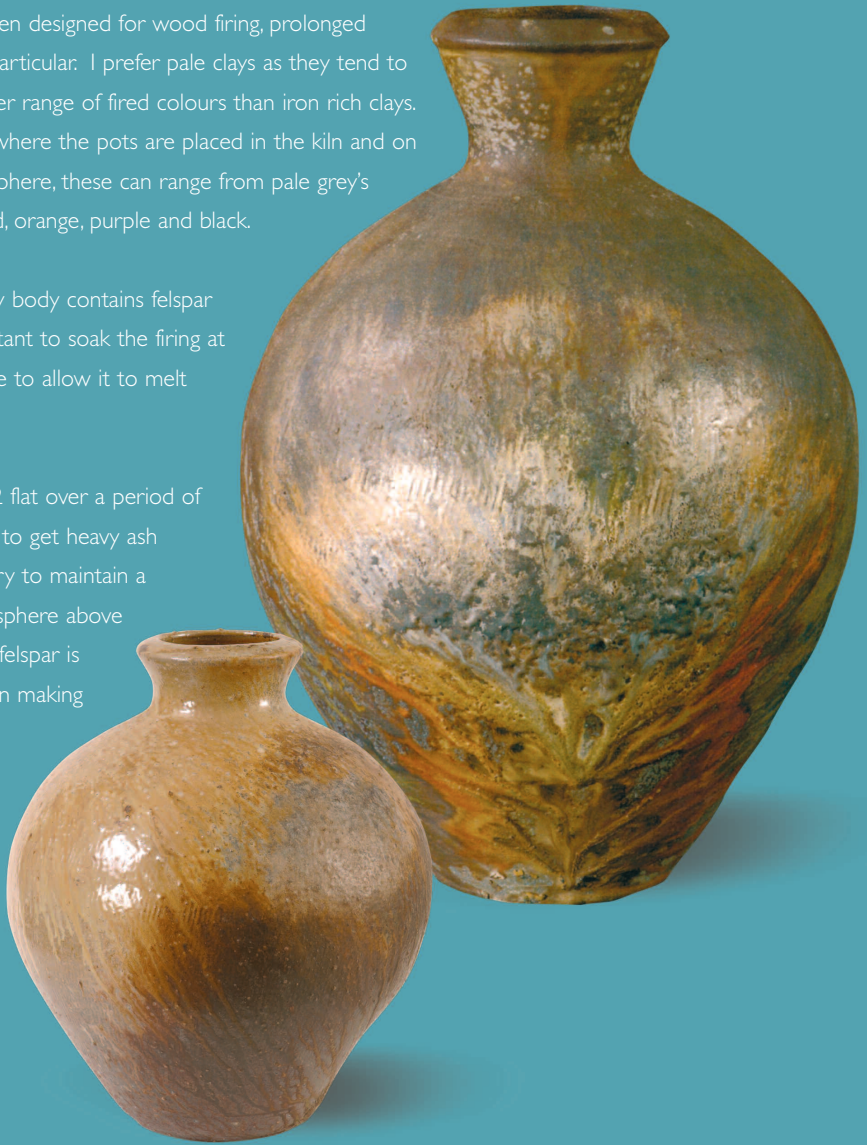
Professional Clays

Svend Bayer Wood Firing Clay Body PF550

This clay has been designed for wood firing, prolonged wood firing in particular. I prefer pale clays as they tend to have a far greater range of fired colours than iron rich clays. Depending on where the pots are placed in the kiln and on the firing atmosphere, these can range from pale grey's and pinks to red, orange, purple and black.

Because the clay body contains felspar sand it is important to soak the firing at top temperature to allow it to melt back.

I fire to cone 12 flat over a period of 5-6 days mainly to get heavy ash deposits and I try to maintain a reduction atmosphere above 900°C, coarser felspar is also added when making bigger pots.



Valentine Clays Ltd
Manufactured in the Heart of the Potteries...

T: 01782 271200
F: 01782 280008

E-Mail: sales@valentineclays.co.uk
Internet: www.valentineclays.co.uk